

RQ *Arte*
★★★★★
2024

Artistically CRAFTED.
BEAUTIFULLY *enjoyed.*



 craft
winemaking

Learn more at rjscraftwinemaking.com

RQ *Arte*
★★★★★
2024

EXPERIENCE THE *art*
OF *craft* WINEMAKING.

Four exquisite **German & Italian wines** sure
to be a multi-sensory experience for both
wine and art lovers alike!

 craft
winemaking



RQ
 ★★★★★
 2024
 Arte



Germany and Italy are home to some of the world's most vibrant and iconic art styles. These old-world countries are coloured by a deep, rich history of architecture, signature art movements and famous landmarks which have influenced countless artists over the centuries.

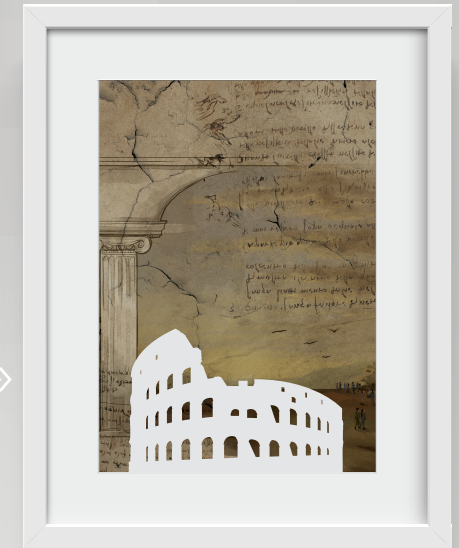
Introducing **RQ24's Arte**, a classic collection of crafted wines that are sure to inspire the artist in you!

Toast each masterfully rendered varietal – stylized by recognizable landmarks and signature artistic styles inspired by their country's incredible art history.

NOTE: Wine is very subjective to all individuals. Different types of winemaking practices can affect the outcome of your wine. Refer to tasting notes for each wine as a guideline for how we describe the profiles of our finished wines.



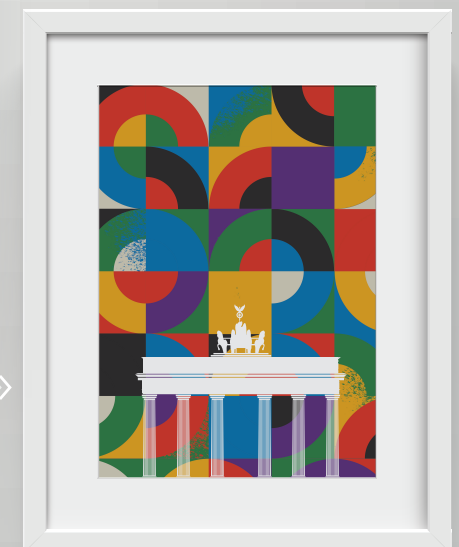
«« **Trebbiano Chardonnay**
 Italy's **Trebbiano Chardonnay** is an elegant and harmonious blend connecting the magnificent artistic flair of the **Baroque** period with the architectural splendor of the **Trevi Fountain**.



Sangiovese Cabernet »»
 Italy's **Sangiovese Cabernet** stuns with its full-bodied profile and an attention for detail reminiscent of **Renaissance** artistry and the exceptional craftsmanship of the **Colosseum**.



«« **Riesling**
 Germany's **Riesling** evokes a pronounced and unmistakable flavour, drawing inspiration from the intense world of **Expressionism** while featuring the alluring **Neuschwanstein Castle**.



PINOT NOIR »»
 Germany's **Pinot Noir** exhibits a refined and understated nature, much like the precision and simplicity of **Bauhaus** design and sleek lines of the symbolic **Brandenburg Gate**.

Trebbiano Chardonnay

ITALY

OAK BODY SWEETNESS

Unoaked
Medium
Dry

Italy's complex **Trebbiano Chardonnay** draws inspiration from the opulent and iconic world of **Baroque** art.

Just like Baroque is characterized by detailed ornamentation and intricate compositions, **RQ24's Trebbiano Chardonnay** delivers crisp citrus flavours that are meticulously complemented by floral notes to create a luscious and stunning treasure.

Sip this carefully crafted white blend and let yourself be transported to the streets of Rome, where the beauty of Baroque and the charm of the **Trevi Fountain** harmonize to create an unforgettable experience for both the senses and imagination.

TASTING NOTES:

A crisp medium-bodied refined wine showing **citrus, lemon and apple notes** with a slight savoury character. Some **floral/herbal notes**.

FOOD PAIRINGS:

A stunning compliment to Italian Cuisine including **Portobello Bruschetta, Linguine alle Vongole** and **Roasted Chicken Risotto**.

Trevi Fountain

One of the most recognizable icons of Rome, this adorned beauty captures the essence of Baroque art with its ornate details and sensational composition.



Sangiovese Cabernet

ITALY

OAK BODY SWEETNESS

Medium
Medium
Dry

Truly remarkable, this **Sangiovese Cabernet Sauvignon** from Italy pays homage to the masterpieces of the **Renaissance** art movement.

Just as the Renaissance period was characterized by artistic expression and craftsmanship, **RQ24's Sangiovese Cabernet Sauvignon** explores the firm tannins and intricately balanced depth of red fruit flavours to tantalize the palate with its dramatic intensity.

Swirl a glass of this expressive red blend and escape to the era of Renaissance Italy, where art, history, and wine converge in perfect harmony with the masterpiece of the **Colosseum**.

TASTING NOTES:

This medium to full bodied wine has **plum, blackcurrant, spice, and a slight licorice note** on the nose that carry through to the palate. Masterfully accompanied by **firm tannins** from the oak.

FOOD PAIRINGS:

A delightful companion to **wood-oven Pizza Margherita, Bistecca alla Fiorentina** or **Penne Ragù alla Bolognese**.

The Colosseum

Considered to be a Wonder of the World, its architectural and structural sophistication along with its enduring craftsmanship make it a magnificent legacy.



Riesling

GERMANY

OAK BODY SWEETNESS

Unoaked
Light
Dry

This extraordinary German **Riesling** embodies the versatility and intricate character of **Expressionism**.

Just as Expressionist artists sought to evoke emotions and provoke thought through their bold brushstrokes and vivid colors, **RQ24's Riesling** is an enticing sensory experience with its lively acidity, vibrant fruit flavours, and fine floral aromas.

As you savour this bright white, immerse yourself in the picturesque Bavarian landscape, where the intensity of Expressionism fuses with the enchanting beauty of the **Neuschwanstein Castle**.

TASTING NOTES:

Refreshing acidity compliments this light bodied wine with pronounced **citrus flavours** and **subtle floral notes**.

FOOD PAIRINGS:

Pairs exceptionally well with classic German dishes like **Sauerbraten** (pot roast), **Spätzle** (egg noodles) and **Wiener Schnitzel**.

Neuschwanstein Castle

Having inspired the iconic world of Disney with its fairytale-like architecture, this enduring castle represents a timeless beauty.



PINOT NOIR

GERMANY

OAK BODY SWEETNESS

Medium
Medium
Dry

Germany's silky **Pinot Noir** is crafted with subtle artistic touches inspired by the **Bauhaus** movement.

Just as Bauhaus design embraces clean lines, geometric forms, and minimalistic elegance, **RQ24's Pinot Noir** holds a delicate balance of berry flavours, structured character and simple sophistication.

Linger over this red's soft tannins and journey to the heart of Berlin, where the aesthetic finesse of Bauhaus art and the timelessness of the **Brandenburg Gate** are echoed in every splendid sip.

TASTING NOTES:

This dry, elegant Pinot Noir gracefully balances **ripe red berry fruits** with the integration of **soft oak tannins**.

FOOD PAIRINGS:

A complimentary delight for popular German dishes including **Roast Duck (Ente)**, **Mushroom Stroganoff** and **Bratwurst**.

Brandenburg Gate

Idolized as one of the most iconic sights and only surviving historical city gate, it symbolises a reunified Germany.

